

Innovation For Creativity

metal ceilings and facades



MADE IN ITALY
MANUFACTURING
QUALITY • DESIGN

METAL STANDARD BAFFLE SET

W30 H40 | TE20 CARRIER





Product range: **METAL STANDARD BAFFLE**
SET W30 H40
 TE20 CARRIER

PRODUCT TYPE

Metal Standard Baffle
 with smooth surface
 Width: 30 mm | Height: 40 mm
 Length: 3000 | 4500 mm

BAFFLE MATERIALS

Aluminum

STRUCTURE

Black steel TE20 carrier
 gap 20 mm | pitch 50 mm
 Length 3000 mm

ANTI-SEISMIC EQUIPMENTS

Antiseismic Kit for:
 ≤ 1,2 m plenum | > 1,2 m high plenum
 on request

HANGERS

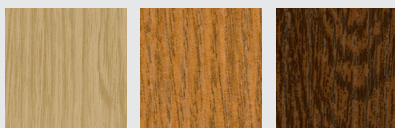
Double hanger with spring
 or threaded bar

ACCESSORIES

Baffle and carrier joints, smooth
 closing caps, shutters.

BAFFLE COLOURS AND FINISHING

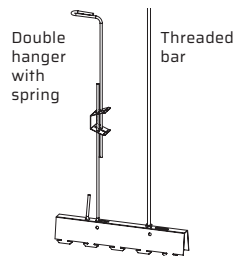
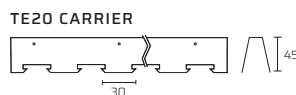
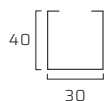
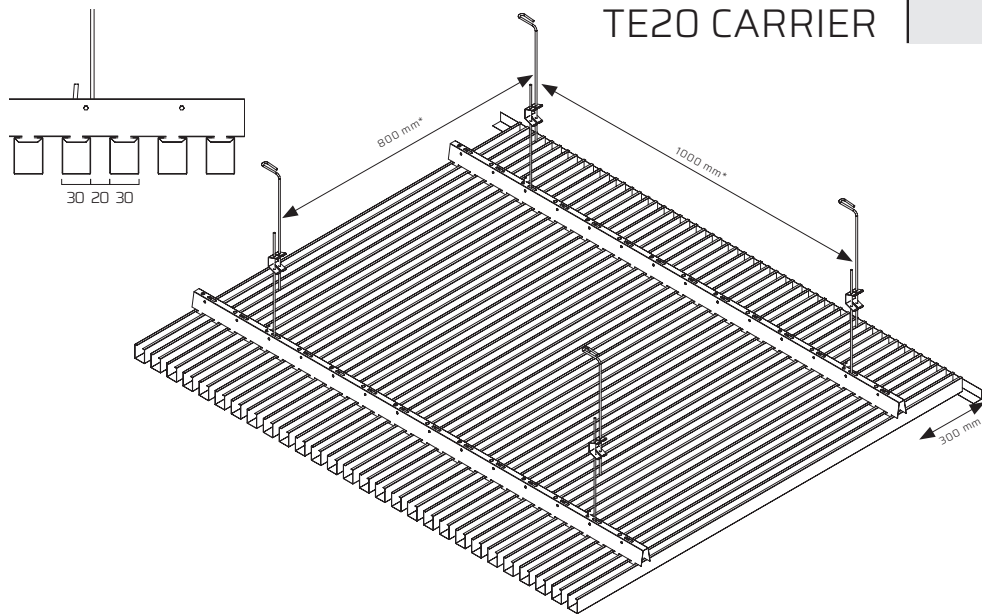
Pre-painted white RAL 9016
 Pre-painted black RAL 9005
 Wood Finishing
 L54 | L50 | L53



WOOD L54

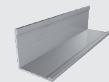
WOOD L50

WOOD L53



Wall angles

"L" PROFILE



25x25 | 20x20 | 20x25 mm
 L=3050 mm

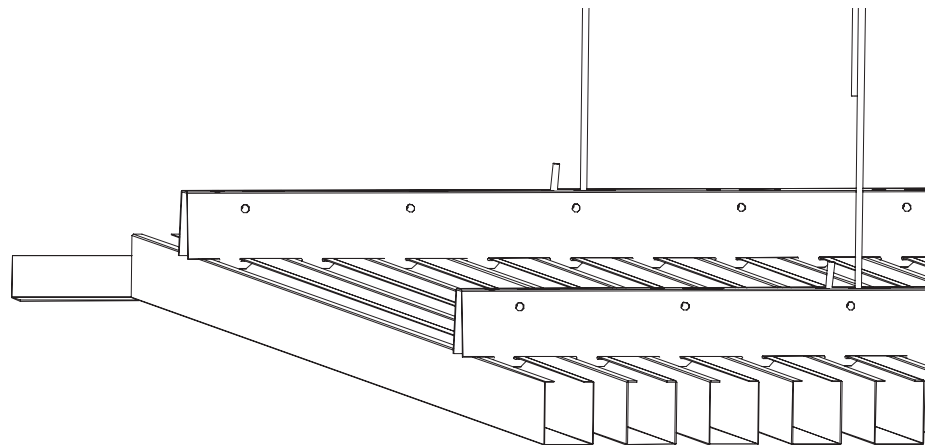
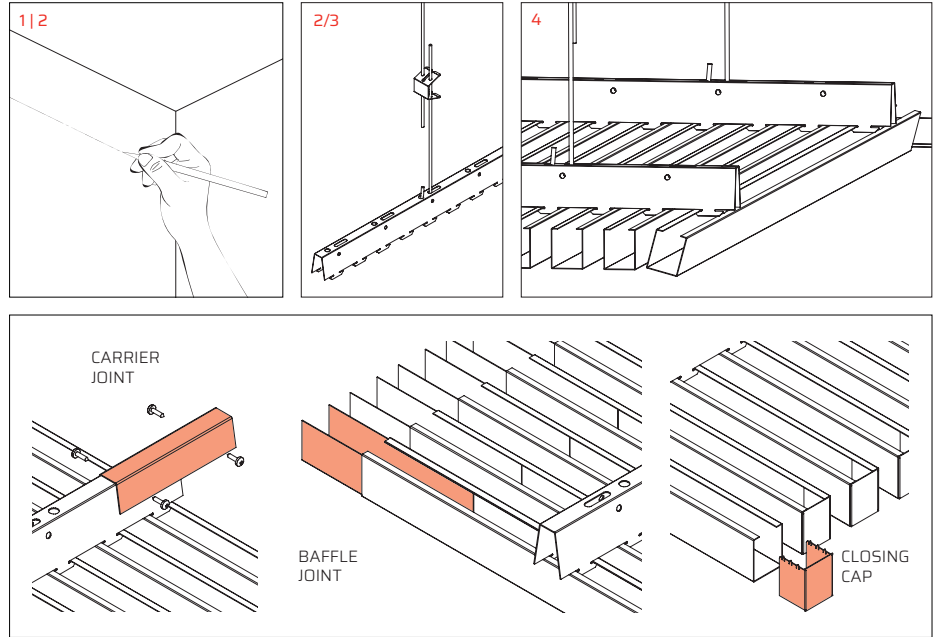
COMPONENTS

ID	DESCRIPTION
1	BAFFLE W30 H40
3	TE20 CARRIER
4	CARRIER JOINT
5	HANGER

*verify **interaxes** and **hanger models** according to the load at m² the antiseismic report and particular conditions. The **fastening** must be checked with regard to the loads, the anchoring base features and the installation accuracy, in order not to compromise the stability of the metal ceiling system. Lightings, accessories and systems must not weigh on the metal ceiling system, but must be independently suspended.

INSTALLATION STEPS

- 1 Determine the height of the metal ceiling with a level and mark it with the string.
- 2 Install the wall angle profiles with screws and / or plugs suitable for the wall material.
- 3 Fix the hangers to the slab and hook the carriers to the hangers, according to the distance calculated for the project. Fix the carrier joints to assure the carriers' alignment.
- 4 Proceed by hooking the baffles to the carriers. Then insert the baffles closing cap when supplied. Fix the baffle joints to assure the baffles' alignment.



*verify **interaxes** and **hanger models** according to the load at m² the antiseismic report and particular conditions. The **fastening** must be checked with regard to the loads, the anchoring base features and the installation accuracy, in order not to compromise the stability of the metal ceiling system. Lightings, accessories and systems must not weigh on the metal ceiling system, but must be independently suspended.

BAFFLE SET RANGE

SET CODE	BAFFLE W30 H40*			TE20 CARRIER**	SQM/SET
	COLOR	LENGHT	PCS/BUNDLE	PCS/BUNDLE	
KITD5S030L5BIC000300	WHITE RAL 9016	3000 mm	16	1	2,40
KITD5S030L5BIC000450		4500 mm	10	1	2,25
KITD5S030L5NER000300	BLACK RAL 9005	3000 mm	16	1	2,40
KITD5S030L5NER000450		4500 mm	10	1	2,25
KITD5S030L5L54000300	WOOD L54	3000 mm	16	1	2,40
KITD5S030L5L54000300		4500 mm	10	1	2,25
KITD5S030L5L50000300	WOOD L50	3000 mm	16	1	2,40
KITD5S030L5L50000450		4500 mm	10	1	2,25
KITD5S030L5L53000300	WOOD L53	3000 mm	16	1	2,40
KITD5S030L5L53000450		4500 mm	10	1	2,25

* Baffle W30 H40 aluminum

** TE CARRIER gap 20 | pitch 50 mm
in black steel

TECHNICAL PERFORMANCES



FLEXION RESISTANCE

Maximum span mm 1200 - **1 Class**
EN13964



CORROSION RESISTANCE

Galvanized steel products: **C2 Class**
Pre-painted galvanized steel products: **C3 Class**
Post-painted galvanized steel products: **C4 Class**
Pre/post-painted aluminium products: **C5 Class**



(RH%) RELATIVE HUMIDITY RESISTANCE

Galvanized steel products: **≤ 90%**
Pre/post-painted galvanized steel products: **> 90%**
Stainless steel and aluminium products: **> 90**



FIRE REACTION UNI EN 13501-1

Structure, suspensions and wall angles: **A1 Class**



ACOUSTICS

Information in "Acoustic Performance"



CLEANING

Wet cloth with warm water and neutral non-abrasive detergents.



COLOR STABILITY

In compliance with standard technical tolerances.
Test according to the ΔE - CIE Lab method.
ISO 7724-2 (3)



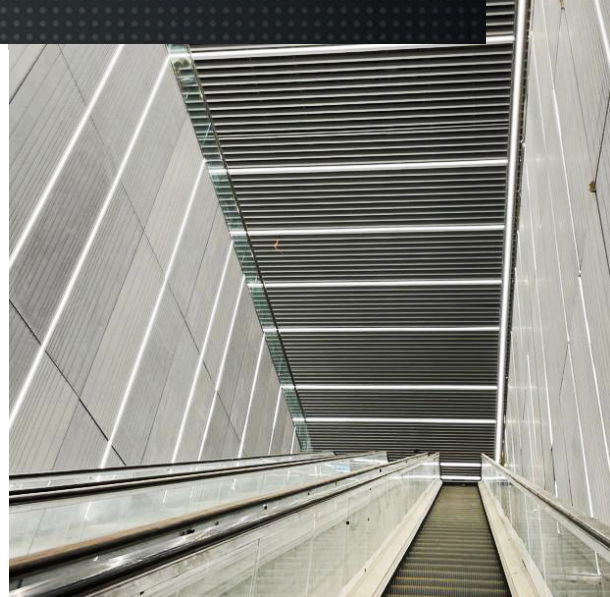
DURABILITY OF PAINTED ITEMS

C Class
EN13964

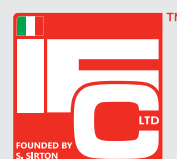


DURABILITY OF GALVANIZED ITEMS

B Class
EN13964



Italian selection products



MADE IN ITALY
MANUFACTURING
QUALITY • DESIGN

I.F.C. LTD
14, Habana Im. Street P.O. BOX 12384 Ashood
Tel: +972 8 6699111 Fax: +972 8 6699122
ifc.co.il - info@ifc.co.il

SUSTAINABILITY



RELEASE OF DANGEROUS SUBSTANCES*

None
CAM 2.4.1.3
EN13964



FORMALDEHYDE*

E1 Class
CAM 2.3.5.5



DISASSEMBLY*

Steel | Aluminium
100% recyclable
CAM 2.4.1.1



MATERIAL DEMOLITION AND REMOVAL*

Non hazardous waste
in compliance with
CAM 2.5.1.



RECYCLED PRODUCT CONTENT*

CAM 2.4.1.8
compliance



GREEN BUILDING

Requirements: **LEED**
(BREEAM and ITACA
for cross-section aspects)

* Data declaration as required by the ISO 14021 standard